

Print Specs Overview

Preparing Your Files for Print



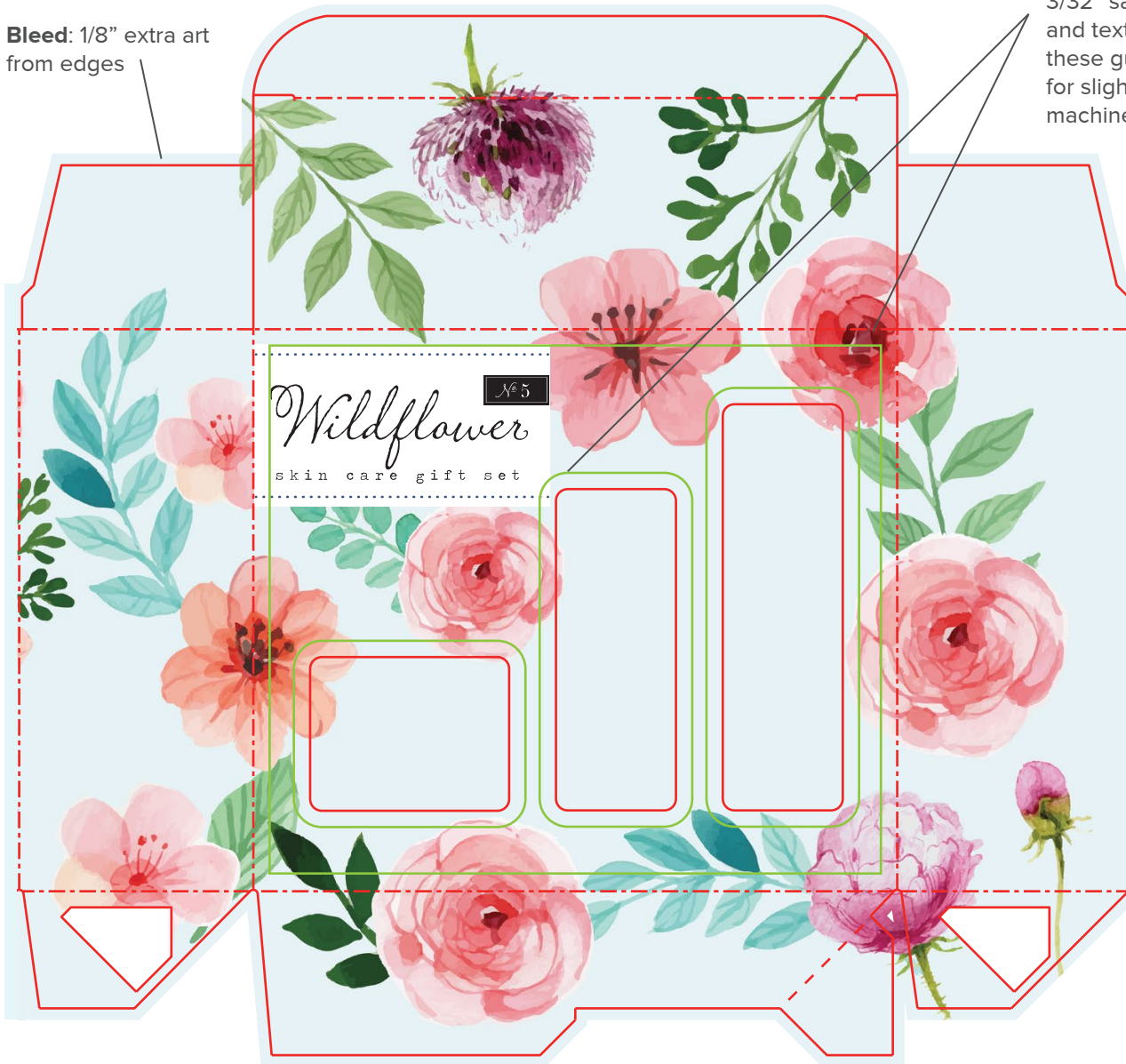
PROFESSIONAL IMAGE

THE PACKAGING SPECIALISTS

— Cut Lines - - - - - Fold Lines

Bleed: 1/8" extra art from edges

Safe Area: We require a 3/32" safe area. All logos and text should be within these guides to account for slight variations in the machine's die cut.



Resolution: 300dpi (Hi-res) or vector



High-resolution or vector files create a clean sharp printed image.



Low-resolution files are not accepted and will degrade print quality.

Color Specifications:

CMYK with Pantone Colors (no RGB)

File Naming:

Please name assets in an identifiable manner. Use of client name, project code, and a version number are preferred.

Example: 29801WildFlower_v2.ai

File Delivery:

ZIP file archive and submit via upload

Fonts: All fonts should be included with submitted assets. Adobe's file packaging process handles this.

Preferred File Formats:

